



"naval coffee-pot"  
"caffettiera navale architettonica" (cm 70x70)

larofico  
bonnino

*Adriana Musto*  
GALLERIA D'ARTE  
www.mustoadriana.it

www.lucabrunoart.it  
info@lucabrunoart.it

BANK  
SIDE  
GALLERY

48 Hopton Street  
London - SE1 9JH  
www.banksidegallery.com

"architectural snail floating"  
"chiocciola architettonica volante" (cm 40x80)



BANK  
SIDE  
GALLERY

LUCA BRUNO



24 November - 30 December 2014  
London - 48 Hopton Street - SE1 9JH

**Luca Bruno** is a young artist who moves in the Italian landscape painting, with the ease and "arrogance" of a veteran, the originality of those who have a rich inner world that wants to come out strongly with the certainty of having a lot to say.

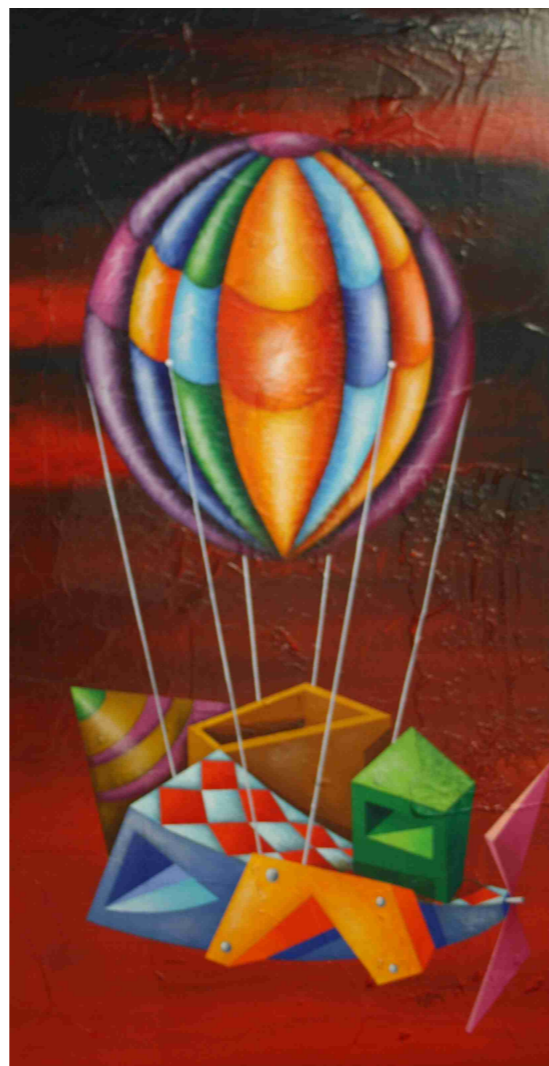
The view that fascinates him is that of nature reduced, raped and subjected to the absurd whims of man who upsets and destroys it.

But the nature defends herself, and here it appears between the geometric beams, wooden or metallic, it is always a simple nature in its plant forms that wants to triumph over its intermediate forms of a virtual reality. The natural reality is always strong and well-defined in the hope that the human sobering allows nature to triumph again.

The whole panorama of Luca Bruno is surreal, the details proceed in a kind of joints in a geometrical alternation of shapes and colors aesthetically pleasing, but the composition informal and coloristic rises always a simple element: a tree, a plant well-defined or, more often, as a triumph wanted a human figure as sharp and significant even seen through the haze of the dream.



"Three cubes and an architectural flight"  
"Tre cubi per un volo architettonico" (cm 100x50)



Oneiric is in fact the whole pictorial world of Luca in which everything has a special meaning, as in a fairy tale for children, in which the artist enters receiving gratification and pleasure. But the world is so desired by the willful imagination of the artist, described and treated by the inventive, never indulgent with the optimistic expectations of the author, there is always a background of sadness that grows and is spread, the more he tries to define shapes and colors with imaginative combinations.

There is in this young man a clear good technique, a deep love for his art and his joy of creation but his production there finds a seething volcano ready to erupt its lava, in this waiting we hope to be good prophets, especially when faith in man and the hope of a more receptive progress to human needs, will bring greater peace in the soul of the artist that his creation will be more relevant to the enormous capacity held.

"incisive mont golfer"  
"mongolfiera incisiva" (cm 50x100)

#### MAIN EXHIBITIONS (PRINCIPALI MOSTRE)

1996 Collettiva di pittura, Cannes (Francia)

1997 Personale di pittura Centro Informa, Veglie (Le)

1998 Collettiva di pittura Novello in festa, Leverano (Le)  
Collettiva di pittura "A TRATTI LIBERI" Veglie (Le)

2000 "ARTISTIKA" personale di pittura, Galatina (Le)  
"Fonfazione Memmo" collettiva di pittura, Lecce

2001 Expo Arte, Bari  
Arte Padova  
Palazzo Comunale, Isernia  
Galleria Alcyone, Napoli

2002 Arte Fiera, Padova  
Expo arte, Bari  
Galleria Civica, Pordenone

2003 Galleria Flexus, Salerno  
Galleria Bigi, Modena  
Galleria Jordan's, Club, Gorla

2014 Galleria La Bilancia, Como  
Galleria Il Pozzo, Milano  
Galleria Il Carroccio, Bergamo

2005 Mediant Gallery, Pescara  
Meridiana gallery, Bari  
Arte Fiera, Padova  
Vitarte, Viterbo

2006 Arte Gallery Modi, Pavia  
Araldo Galleria, Udine  
"Ala Viale" galleria, Lecco

2007 Vicenza Arte, Vicenza  
Lineart Liegi  
"Centro Cultura", Barletta

2008 Expo arte, Bari  
Mediant Gallery, Pescara  
Serrano arte, Reggio Calabria  
Palazzo Kursaal, Giulianova Lido

2009 Vitarte, Viterbo  
Vicenza Artefiera  
A. Musto Galleria, Veglie (Le)

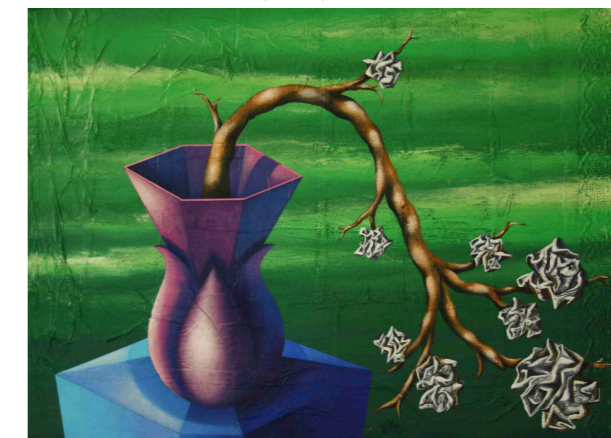
2010 Galleria La Meridiana, Salerno  
Centro Cultura, Barletta  
Galleria La Bilancia, Como

2011 A. Musto Galleria, Veglie (Le)  
Art Mallano, Rotterdam  
Mediant Gallery, Pescara

2012 Expo Arte, Bari  
Mediant gallery, Pescara  
A. Musto galleria, Veglie (Le)

2013 Art'Spirine P.co Reg. Appia Antica  
"Sala Nagasawa"  
Espace SAINT SAUVEUR, Parigi

2014 Bankside Gallery, London



withered memories on a branch  
"Il ramo dei ricordi accartocciati" (cm 50x70)